

IKEBUKURO GUIDE BOOK

LUCKY OWL TOWN

Free



Comes with a convenient Ikebukuro MAP !



東京池袋

Go restaurant hopping to experience all the famous stores in this ramen battleground !

You'll lose out if you don't go !? Experience all of Japan right here !

Valuable information

◆Travel Information

Japan National Tourism Organization (JNTO)
TIC TOKYO (Tourist Information Center Tokyo) (TIC)

http://www.jnto.go.jp/

Marunouchi Trust Tower North, 1-8-1 Marunouchi, Chiyoda-ku, Tokyo

TEL: 03-3201-3331

Opening hours: 9:00-17:00 (closure day 1.January)

The tourist information center of JNTO provide you with visitor information written in English, Chinese and Korean. Telephone inquiries from tourists are welcome. Sightseeing brochures and maps are also available for free. Open year round(except new years day)

◆ATM:Cash Drawer

Seven Bank ATMs
(UnionPay,VISA,AMEX,Diners,JCB,Discover)

- TOKYU HANDS Ikebukuro Store 1F ⑦map P3-B
- BIC CAMERA Outlet Ikebukuro East Store 1F map P2-C
- Seibu Department Store Ikebukuro main store ⑩map P2-C

◆Free WiFi Spots in Ikebukuro

- Seattle's Best Coffee Ikebukuro Sunshine 60 shop ②map P3-A
- LUMINE Ikebukuro Restaurant Floor 8F,9F ⑨map P2-D

◆The one-day pass for Tokyo metro.

The special one-day pass and two-days pass are available in the airport for tourists making a trip to Tokyo.

One-day pass : 600yen

(Cheaper than ordinary one-day pass : 710yen sold in station)

The Japanese conversation book by pointing

おはよう (ございます) Good morning
ohayo(gozaimasu)

こんにちは Hello
konnichiwa

すみません (呼びかけ) Excuse me,
Sumimasen

ありがとう (ございます) Thank you,
Arigatou(gozaimasu)

ごめんなさい I' m sorry,
Gomen nasai

はい/いいえ Yes / No
hai / iie

お手洗い Restrooms
ote-arai

〇〇をください。I' ll take it.
〇〇wo kudasai

〇〇は、どこですか? Where is 〇〇?
〇〇wa doko?

おすすめは? What is your recommendation?
Osusume wa?

ちょっと見ているだけです。I'm just looking,
Miteru dake,

着てみてもいいですか? Could I try it on?
Shichaku

これは何ですか? What is This?
Kore nani?

いくらですか? How much?
Ikuradesuka?



INDEX

TOWN MAP	2-3p
Sunshine City Area	4-6p
Sunshine 60 Street Area	7-8p
Sweets & Goods in Ikebukuro	P9
Sightseeing guidance to Ikebukuro	10-11p

Ramen-noodles store	12-13p
Amusements	14-15p
Ikebukuro East Exit Area	16-17p
Ikebukuro West Exit Area	18-20p
Hotel Guide	21-22p





- 1 サンシャインシティ
Sunshine City
- 2 サンシャイン60展望台
Sunshine60 Observatory
- 3 サンシャイン水族館
Sunshine Aquarium
- 4 サンシャインシティ
プリンスホテル
レストラン バイエルン
Sunshine City Prince Hotel
bayern restaurant
- 5 ナンジャタウン
Nanjatown
- 6 J-WORLD TOKYO
J-WORLD TOKYO
- 7 東急ハンズ池袋店
Tokyu Hands Ikebukuro Store
- 8 ねこぶくろ
Nekobukuro
- 9 アニメイト池袋本店
Animate Ikebukuro
- 10 ACOS池袋本店 (アニメイトサンシャイン内)
ACOS Ikebukuro (Animate Sunshine)
- 11 AMLUX東京
AMULUX Tokyo
- 12 Edy's Bread Café 池袋
Edy's Bread Café Ikebukuro
- 13 池袋PARCO
Ikebukuro PARCO
- 14 西武百貨店池袋本店
Seibu Department Store Ikebukuro Main Store
- 15 ビックカメラ池袋本店
Bic Camera Ikebukuro Main Store
- 16 紙のたかむら
TAKAMURA paper's shop
- 17 ドン・キホーテ
池袋東口駅前店
Don Quijote Ikebukuro Higashiguchi Ekimae Store
- 18 東武百貨店池袋店
Tobu Department Store Ikebukuro
- 19 ルミネ池袋
LUMINE Ikebukuro
- 20 マルイシティ池袋
Marui CITY Ikebukuro
- 21 ホテルメトロポリタン
Hotel Metropolitan
- 22 Echika池袋
Echika IKEBUKURO
- 23 Esola池袋
Esola IKEBUKURO
- 24 千登利
Chidori
- 25 ロサ会館
ROSA KAIKAN
- 26 鉄道模型店Models IMON
Railroad model's shop Models IMON
- 27 ラウンドワン
ROUND ONE Ikebukuro
- 28 三原堂
MIHARADOU
- 29 タカセ洋菓子
TAKASE confectionery

IKEBUKURO TOWN MAP

Icon					
	Food		Shopping		100yen shop
	Ramen		Convenience store		Hotel
	Sightseeing		Police station		Amusement
	Hospital		Drug store		



Sunshine City



When you think of Ikebukuro landmarks, this is one place which immediately comes to mind. In addition to a variety of amusement facilities, there is also a hotel, gourmet food, and a shopping center, making it one of the best places in Tokyo where you can stay the entire day without getting bored.



Spectators are delighted as seals frolic and loop high into the air.



Jelly fish gather and surround the tunnel making for great photo opportunities?

Sunshine City

"A lot of fun!"
Commercial complex



The Sunshine City

①サンシャインシティ

- ①<http://www.sunshinecity.co.jp>
- ②3-1 Higashi-Ikebukuro, Toshima-ku
- ③Depends on shop and facility. (SunshineCity alpa Shopping 10:00-20:00/ Restaurant 11:00-22:00)
- ④Depends on shop and facility.
- ⑤Depends on shop and facility.

Hotel, shopping mall, dining and wide variety of amusement facilities. Have fun all day!



You can visit a variety of Japanese and international restaurants. There are also many variety goods stores and cafes.

If you present "IKEBUKURO GUIDE BOOK" Your admission fee can be discounted.

☺ Sunshine 60 Observatory

②サンシャイン60展望台

- ①<http://www.sunshinecity.co.jp>
- ②60th Floor Sunshine 60 Bldg.
- ③3-1 Higashi-Ikebukuro, Toshima-ku
- ④10:00-21:30 *Last admission is 30 minutes before closing time.
- ⑤open year round
- ⑥VISA/MASTER/JCB

Enjoy the panoramic view from 251 meters up. You will see Mt. Fuji on good climate condition. Night view would be also nice.



You can see a stunning view especially the direction of cluster of high-rise buildings.

サンシャイン60展望台 Viewpoint overlooking the entire Tokyo.



On the clear day, you can see distant such as Mt. Fuji.



The tank which imagined the sea of the southern country. The blue world spreads on the whole surface.



If you present "IKEBUKURO GUIDE BOOK" Your admission fee can be discounted.

"The oasis in the sky" is the key concept of the aquarium

☺ The Sunshine Aquarium

③サンシャイン水族館

- ①<http://www.sunshinecity.co.jp>
- ②World Import Mart Bldg., Sunshinecity, 3-1 Higashi-Ikebukuro, Toshima-ku, Tokyo
- ③10:00-20:00(April 1 - October 31), 10:00-18:00(November 1 - March 31)
- *Last admission is 1 hour before closing time
- ④open year round ⑤VISA/MASTER/JCB

Extraordinary space surrounded by water and plants. One of the most popular performance "Sunshine Aqua Ring" shows seals swim as if they flew over city.



Prince Hotel
Sunshine City

If you present "IKEBUKURO GUIDE BOOK" If you present the guidebook at Bayern Restaurant, you can receive a 10% discount for lunch and dinner in a buffet style.

Enjoy a rich variety of dishes at this buffet-only restaurant of hotel direct management



④サンシャインシティ プリンズホテル レストラン バイエルン

☎03-3988-1111

- ①<http://www.princehotels.com/en/sunshine/bayern-restaurant>
- ②3-1-5, Higashi-Ikebukuro, Toshima-ku
- ③Breakfast: 6:30-10:00
- Lunch: 11:30-14:30 (Sat, Sun, and a holiday are 90-min systems to 3:00P.M.)
- Dinner: 17:30-21:00
- ⑥UnionPay/VISA/MASTER/AMEX/ Diners/JCB

A rich variety of dishes including Japanese cuisine such as crab, sushi and freshly-fried tempura served at the dinner hour. Give special rates for guests come after 8:00 p.m./¥3,800 per person ⇒¥2,500 per person



From children to adults will enjoy a wide variety of dishes at dinner buffet.



Chef making freshly-fried tempura before your eyes.



Fresh crabs at dinner buffet



High-rise hotel of 38 stories above the ground to be located in a landmark "composition city sunshine city" of Ikebukuro



The contents of cooking may be changed. It may be unable to use by a charter.

ナンジャタウン

Offers impressive experience!



The indoor theme park enjoyable even on rainy day. The Namja town offers new entertainment, delicious foods and impressive experience. Reopen on July 11th.

⑤ナンジャタウン

July 11th OPEN!

- ①http://www.namja.jp
- ②Sunshine City World Import Mart building 2F
- ③10:00-22:00(Last entry 21:00) ④Open year round
- ⑤JCB/AMEX/Diners/NICOS/Master/VISA/DC/UC/SAISON/Orico

※Creditcard can be used. Ticket sales and shops.
 ※Use is impossible at restaurants and foods shop.
 ※Admission: Adults 500 yen. Children (4 years old ~ under elementary school students): 300 yen



Image of new attraction "Magical School Experience"

Sunshine 60 Street



The largest shopping district in Ikebukuro, stretching from Green Oodoori to Sunshine City. Packed with restaurants, movie theaters, arcades and more, the street is closed to vehicles at all times except during late night and early morning hours. The street is very lively with lots of people coming and going.



The entrance to Tokyu Hands is located right next to the entrance for Sunshine City



A ball-point pen whose ink can be erased with the rubber on the end of the pen's body

A wide selection of unique Japanese gifts!



An extensive lineup featuring everything from the latest models to standard models. Porter, a Japanese brand



⑦東急ハンズ池袋店

- ①http://ikebukuro.tokyu-hands.co.jp/
- ②1-28-10 Higashi-Ikebukuro
- ③10:00-20:30
- ④Open unless otherwise noted
- ⑤UnionPay/VISA/MASTER/AMEX/Diners/JCB

Duty free procedures can be performed on the first floor. Use your UnionPay(Ginren) card for 5% off. Special coupons are available if you show your passport (excluding Japanese passports).



Come, see, and touch! A relaxing space where you can play with cute cats.



⑧ねこぶくろ

- ①http://www.p2-pet.com/nekobukuro/index.html
- ②1-28-10 Higashi-Ikebukuro ③10:00-20:00
- ④Open unless otherwise noted
- Admission (Tax included): Adults (junior high school students and older) 600 yen : children (2 years old and older) 400 yen, Couples (adults only) 1,000 yen : 1-day free pass 1,000 yen

You can take pictures with your favorite cat too!



The indoor theme park where you can enjoy the world of "ONE PIECE", "NARUTO", "DRAGON BALL" and etc.



July 11th OPEN!

Offers new entertainment playing with popular characters of "WEEKLY SHONEN JUMP" which you cannot experience anywhere else.

⑥J-WORLD TOKYO

- ①http://www.namco.co.jp/j-world
- ②Sunshine City World Import Mart building 3F
- ③10:00-22:00(Last entry 21:00)
- ④Open year round
- ⑤JCB/AMEX/Diners/NICOS/Master/VISA/DC/UC/SAISON/Orico

※Creditcard can be used. Ticket sales and shops.
 ※Use is impossible at restaurants and foods shop.

※Admission: Adults 1300 yen, Children (4 years old ~ under junior high school students) 1000 yen

©O/S-F-T ©B/S-T ©K S/S-T-P

Ikebukuro is a treasury of comics and anime.



animate

The world's biggest anime shop. It's fun to just watch!



⑨アニメイト池袋本店

- ①http://www.animate.co.jp/
- ②1-20-7 Higashi-ikebukuroToshima-ku
- ③10:00-21:00
- ④Open year round
- ⑤UnionPay/VISA/MASTER/AMEX/JCB

Japanese latest comic books, the figures of popular anime, goods, CDs and DVDs in the spacious 9 stories building.



The flagship store of the Animate operating more than 100 stores in Japan. Full of anime, comics and games.



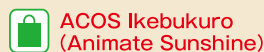
A lot of character goods are only available at the Animate.



Don't miss a huge amount of comics on the 2F and 4F. Get latest one!



The animated cartoon wanting to become a character goes to here!



⑩ACOS池袋本店 (アニメイトサンシャイン内)

- ①http://www.animate-costume.jp/
- ②3-2-1 Higashi-Ikebukuro
- ③11:00-20:00
- ④Open year round
- ⑤VISA/MASTER/AMEX/JCB

1F-3F are a cosplay specialty store of the character of anime or comics. A rich selection of cosplay accessories and high quality costumes.

Otome (Maiden) Road

In contrast to Akihabara, where otaku guys gather, this is sacred ground for otaku girls. Located on the west side of Sunshine City, this street is lined with stores that carry comics, fanzines, anime goods, and a variety of other products for girls.



Sacred place of comics "Tokiwa-Sou"

Great masters who made Japanese comics culture such as Osamu Tezuka, Fujio Fujiko, Shotaro Ishinomori, and Fujio Akatsuka spent the youth with "Tokiwa-Sou".

It was near the first station "Shiinamachi" from Ikebukuro.



Monument "heroes of Tokiwa-Sou"



5 floors(B1F-4F) full of TOYOTA latest lineups.



AMLUX
See, ride, and enjoy TOYOTA's latest models.

TOYOTA Auto Salon AMLUX Tokyo

⑪トヨタ オートサロン アムラックス東京

- ①http://www.amlux.jp
- ②3-3-5, Higashi-Ikebukuro, Toshima-ku
- ③11:00-19:00 (1F and B1F are open until 21:00)
- ④Monday, (the following day if Monday falls on a holiday) and year-end, New Year's holidays
- ⑤VISA/MASTER/AMEX/Diners/JCB
- ※Credit cards can only be used for "Time Rentals". The parking lot only accepts cash.

More than 70 latest models is this grand showroom. Simulator-style attractions, original games and fun-filled car related information.

2 minutes from the JR Ikebukuro Station east exits

Many local specialties produced in Miyagi prefecture part of Tohoku district.

Miyagi Hometown Plaza

宮城ふるさとプラザ

- ①http://cocomiyagi.jp/data/01English.pdf
- ②Toike Building 1.2F, 1-2-2, Higashi-Ikebukuro, Toshima-ku
- ③11:00-20:00
- ④Year-end and New Year's holidays
- ⑤VISA/MASTER/AMEX/Diners/JCB

MAP P2-C

Tasty foods of Miyagi, Japanese sake, rice and craftwork. Buy souvenir from Miyagi.



The north building B1F of JR Ikebukuro Station east gate

The cafe located in the station offers freshly baked bread and coffee.

Edy's Bread Café



⑫Edy's Bread Café 池袋

- ①http://www.foods.metropolitan.jp/delica_bakery/
- ②The underground passage (Cherry-Road) outside the JR Ikebukuro Station ticket gate
- ③Weekdays 7:00-22:00
Weekends and holidays 7:30-21:00
- ④Open unless otherwise noted
- ※The contents of cooking may be changed according to a season or the weather.

A waiting you with a wide selection of drinks and freshly baked breads.



Find the red sign. 46 non-smoking seats and 30 smoking seats are separated.

Tasty and safety foods from Hokkaido.

If you present "IKEBUKURO GUIDE BOOK" Offer present to the first 500 people.

The Hokkaido Products Plaza

北海道どさんこプラザ 池袋店

- ①http://www.dosanko-plaza.jp/index.html
- ②ISP(Ikebukuro Shopping Park) B1F, 1-29-1, Minami-Ikebukuro, Toshima-ku
- ③Weekdays 10:00-20:30
Weekends and holidays 10:00-20:00
- ④Open year round
- ⑤VISA/MASTER/AMEX/Diners/JCB

MAP P2-C

Taste Hokkaido foods in Tokyo.



Croissant sandwich, croque-monsieur and drink for "Morning Sets"



Hot dog, pizza and drink for "Lunch Sets"



Popular pizza, beer and other beverages for "Dinner Sets"



Unique package expressing the image of Tokyo sky tree is getting higher.

Rusks with light texture and rich butter flavor.

GATEAU FESTA HARADA GOUTER de ROI /Box (R4)

26 sheets (2 sheets x 13 bags) ¥1,050 (including tax) 18 MAP P2-D

Tobu Department Store Ikebukuro B1F Zone6 Refer to P.18.

18 MAP P2-D

©TOKYO-SKYTREE

TAIGETUAN Tokyo sky tree® Yohkan (Azuki bean)

One ¥1,001 (including tax)
Tobu Department Store Ikebukuro B1F Zone5 Refer to P.18.

Sweets & Goods in Ikebukuro

How about for a souvenir?



The "Yohkan" mixed up by traditional way, have a flavor of maccha.

TAWARAYA YOSHITOMI Bancha Yohkan

One ¥1,001 (including tax) 14 MAP P2-C

Seibu Department Store Ikebukuro Main Store B1F CenterZoneB5 Refer to P.16.



The "Monaka" cakes made in the image of an owl which represents Ikebukuro. Sweet Tokachi bean paste from Hokkaido in the cakes.

MIHARADOU ⑳三原堂

IKE-BUKUROU-MONAKA
5-piece ¥1,000

- ①http://www.ik-miharado.shop-site.jp/
- ②1-20-4, Nishi-Ikebukuro, Toshima-ku
- ③10:00-19:00
- ④Open unless otherwise noted



The 100 types of cubic rice crackers represent "Ogura Hyakunin-issu"

OGURA SANSOH Karuta-Asobi Box

210g (80 bags of standards) ¥1,050 (including tax) 14 MAP P2-C

Seibu Department Store Ikebukuro Main Store B1F CenterZoneB5 Refer to P.16.



Cooked sweets, a biscuit putting on slice almond boiled down with honey and fresh cream.

TAKASE confectionery ㉑タカセ洋菓子

ARMOND TUIL
9-piece ¥1,000

- ①http://www.takase-yogashi.com/
- ②1-1-4, Higashi-Ikebukuro, Toshima-ku
- ③8:00-20:00
- ④Open year round



The special version of popular "Tokyo Banana". Soft sponge cakes with cream taste of banana pudding in them.

GINNO BUDOU Tokyo Banana banana pudding taste

8-piece ¥1,050 (including tax) 14 MAP P2-C

Seibu Department Store Ikebukuro Main Store B1F CenterZoneA5 Refer to P.16.



"Sensu" is Japanese folding fans, a lot of paper craft works represents Japanese lifestyle.

"Origami" is used for traditional Japanese art in which various forms such as animals, flowers and tools are created by folding square paper.

TAKAMURA paper's shop Origami and Japanese paper accessories

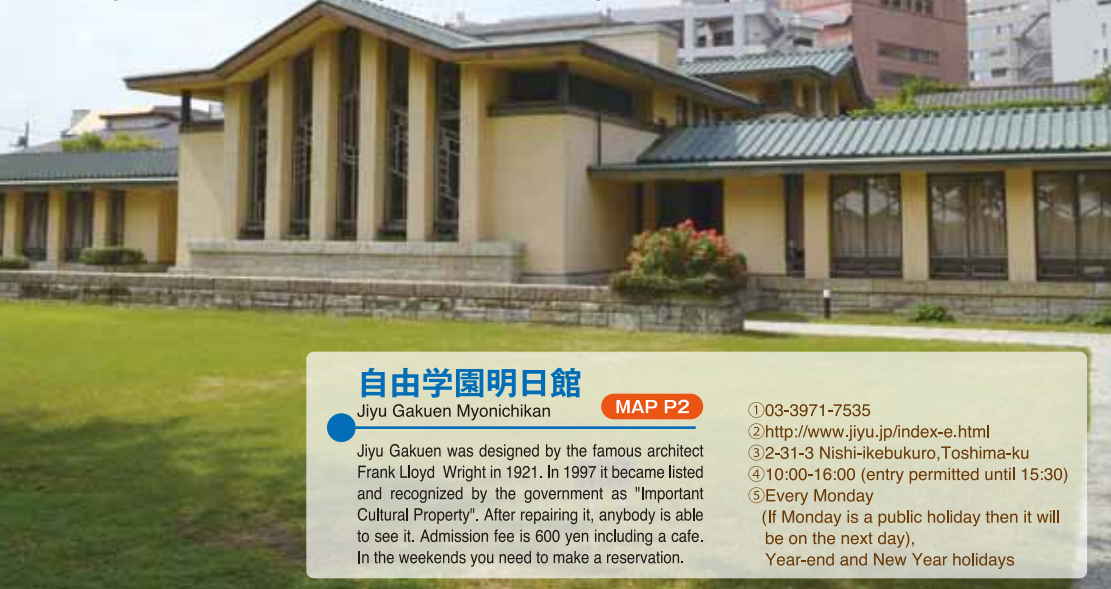
16 MAP P2-C Refer to P.17.

Do experience Ikebukuro!

Ikebukuro Tourist Information

It seems like Ikebukuro is a commercial city. But there are many cultural sites and spots near Ikebukuro station.

The shrines and temples, spots you can experience and enjoy, Japanese restaurants with the common touch. Explore the Ikebukuro city full of attractive places.



自由学園明日館

Jiyu Gakuen Myonichikan

MAP P2

Jiyu Gakuen was designed by the famous architect Frank Lloyd Wright in 1921. In 1997 it became listed and recognized by the government as "Important Cultural Property". After repairing it, anybody is able to see it. Admission fee is 600 yen including a cafe. In the weekends you need to make a reservation.

- ①03-3971-7535
- ②<http://www.jiyu.jp/index-e.html>
- ③2-31-3 Nishi-ikebukuro, Toshima-ku
- ④10:00-16:00 (entry permitted until 15:30)
- ⑤Every Monday
(If Monday is a public holiday then it will be on the next day),
Year-end and New Year holidays

Tokyo syoubou Ikebukurotomin Bōsai center
(Tokyo fire department)

池袋防災館

Ikebukuro Earthquake Hall (Ikebukuro Bōsai-kan)

MAP P2

You can experience emergency drills in relation to earthquakes, fires and smoke simulation within two hours. You can try 5 levels of earthquakes including the Great EastJapan Earthquake. You can also watch a documentary film of the Great EastJapan Earthquake. The film starts from 9:00am, 1:00pm and 3:00 pm. Groups should make a reservation.

- ①03-3590-6565
- ②<http://www.tfd.metro.tokyo.jp/hp-ikbskan/>
- ③2-37-8 Nishi-ikebukuro, Toshima-ku
- ④9:00-17:00
- ⑤Tuesday and 3rd Wednesday (If it is a public holiday then it will be on the next day), Year-end and New Year holidays
(December 28 - January 4)



Permanent exhibit

the model of "Yamiichi"



豊島区立 郷土資料館

Toshima Ward Local Museum

MAP P2

Historical center for learning about Toshima-ku. Especially, the model of "Yamiichi" (Black Market) opened in Ikebukuro after World War Two is introduced in text books at primary and junior high schools. The model is worth coming to see because of the attention to detail. Admission free.

- ①03-3980-2351
- ②<http://www.city.toshima.lg.jp/bunka/shiryokan/>
- ③2-37-4 Nishi-ikebukuro, Toshima-ku
- ④9:00-16:30
- ⑤Every Monday, 3rd Sunday, Year-end and New Year holidays
(December 28 - January 4)



造幣東京博物館

Mint Museum of Tokyo Branch

MAP P3

The museum is inside the Tokyo Mint. There is much information about the making of vintage coins at the Mint, and roughly 1,000 types of coins and orders are displayed. You need to make a reservation in advance for seeing the mint itself, but there is no officer who speaks English. Admission free.

- ①03-3987-3153
- ②http://www.mint.go.jp/eng/enjoy-eng/eng_plant_museum_tokyo.html
- ③4-42-1 Higashi-Ikebukuro, Toshima-ku
- ④9:00-17:00
- ⑤From Monday to Friday (except public holidays and year-end/new year holidays). It sometimes closes temporarily.



鬼子母神

Kishimojin

MAP P2

The history of the Shrine dates back 1200 years. If you takes the road with 400 year old Zelkove trees, you can feel a small piece of nature in such a large city allowing you to forget your are in the middle of Tokyo.

- ①03-3982-8347
- ②<http://www.kishimojin.jp/index.html>
- ③3-15-20 zoshigaya, Toshima-ku
- ④6:30-17:00
- ⑤You can see it anytime

Get your tourism information here!

(社)豊島区観光協会 観光情報センター

Tourist Information Center

MAP P3

In addition to various leaflets and pamphlets, you can learn about the latest trends and information on Ikebukuro from the staffs who are always available to help you. *Free to use by all

- ①03-3981-5849
- ②<http://www.kanko-toshima.jp/index.html>
- ③1-20-10 higashi-ikebukuro, Toshima-ku,
Tshohima-kumin-center 2f
- ④9:00-18:00 Mon-Sat
- ⑤Closed December 31, January 1-3

美久仁小路

Mikunikoji

MAP P3

There is a traditional drinking district which has been running from after World War Two on the east side of the station. People can enjoy traditional Japanese foods and drinks. Why don't you compare the views of the main street, Sunshine 60 Street, then you can trip back to Ikebukuro's earlier times.



The Origin of the name of Ikebukuro

The origin of the name of Ikebukuro derives from a round pond named Fukuro-pond, which was at the Hotel Metropolitan (Nishi Ikebukuro District 1). You can see many owl statues (In Japanese, it is Fukuro) around the town. It is because people living in Ikebukuro tried to make them meeting points like Hachiko statue in Shibuya. Those statues are symbols of happiness, in Japanese happiness means FUKU.

Inside the station, You can find the "Ikebukuro" statue.



The most popular ramen-noodles store in Ikebukuro is introduced.



万世麺店 池袋サンシャイン店

MANSEI-MEN-TEN Ikebukuro Sunshinecity

- ①03-6914-0729
- ②http://www.niku-mansei.com/contents/02shiten/02tokyo_ra_ikebukuro.html
- ③Sunshinecity ALPA B1F, 3-1-1, Higashi-Ikebukuro, Toshima-ku
- ④10:00-22:00
- ⑤Open year round

MAP P3-A

Pa-Ko Ramen
790 yen
(tax included)



Noodles with fried pork loin fritter or "paiko"

喜多方ラーメン坂内 池袋サンシャイン店

Kitakata Ramen Bannai Ikebukuro Sunshine City store

- ①03-3982-4977
- ②http://ban-nai.com/store_page/b71/b71index.htm
- ③Sunshine City ALTA B1F, 3-1-1, Higashi-Ikebukuro, Toshima-ku
- ④11:00-22:00
- ⑤Open year round

MAP P3-A

Kitakata Ramen
580 yen
(tax included)



Kitakata city located in Fukushima part of Tohoku district. Noodles with slices of barbecued pork, soy source taste.

蒙古タンメン中本 池袋店

Mouko Tanmen NAKAMOTO Ikebukuro

- ①03-3989-1233
- ②http://www.moukotanmen-nakamoto.com/address.html
- ③San-Sala Build 2F, 3-26-6, Nishi-Ikebukuro, Toshima-ku
- ④10:00-02:00
- ⑤Open year round

MAP P2-D

Mouko Tanmen
770 yen
(tax included)



Noodles seasoned with miso and special chili peppered tofu.

東池袋 大勝軒 本店

TAISHO-KEN Higashi-Ikebukuro main store

- ①03-3981-9360
- ②http://www.tai-sho-ken.com/shoplist/index.html
- ③2-42-8, Minami-Ikebukuro, Toshima-ku
- ④11:00-22:30
- *It is finished as soon as soup has been sold out
- ⑤Open year round

MAP P3

南池袋 大勝軒

TAISHO-KEN Minami-Ikebukuro store

- ①03-5951-2221
- ②Same as above
- ③2-27-16, Minami-Ikebukuro, Toshima-ku
- ④11:00-23:00
- ⑤Open year round

MAP P2



Originator of "Tsuke-men", rich taste of vinegar mixed with sugar.

Tokusei Morisoba
700yen
(tax included)

博多風龍 池袋西口店

Hakata Furu Ikebukuro west

- ①03-3987-3177
- ②http://fu-ryu.net/shop/guide#tonkotsu
- ③1-26-5, Nishi-Ikebukuro, Toshima-ku
- ④Weekdays 11:00-03:00, Sunday and Holiday 11:00-20:00
- ⑤Open year round

MAP P2

サンシャイン通り店

Hakata Furu Sunshine street

- ①03-5952-5550
- ②Same as above
- ③1-23-8, Higashi-Ikebukuro, Toshima-ku
- ④Weekdays 11:00-03:00 Sunday and Holiday 11:00-20:00
- ⑤Open year round

MAP P3-B

池袋東口店

Hakata Furu Ikebukuro east

- ①03-3988-4646
- ②Same as above
- ③1-8-6, Higashi-Ikebukuro, Toshima-ku
- ④Weekdays 11:00-03:00 Sunday and Holiday 11:00-20:00
- ⑤Open year round

MAP P2-C



Hakata noodles with rich and creamy soup, 2 free refill of noodles.

Tonkotsu Ramen
500 yen
(tax included)

味千拉麺 池袋店

Ajisen Ramen Ikebukuro

- ①03-3986-8747
- ②http://www.aji1000.co.jp/shopinfo/tenpo_info_1.php?ID='113'
- ③3-33-10, Nishi-Ikebukuro, Toshima-Ku
- ④11:00-20:00
- ⑤Open unless otherwise noted

MAP P2-D

Ajisen Ramen
600 yen
(tax included)



Taste of original kumamoto noodles with special "Senmi oil"

えるびす 池袋西口本店

ERUBISU Ikebukuro west main store

- ①03-5396-3445
- ②http://www.elvis.co.jp/kodawari/tukemen.html
- ③Royalplaza 1F, 3-30-2, Nishi-Ikebukuro, Toshima-Ku
- ④11:00-24:00
- ⑤Open year round

MAP P2-D

池袋東口店

ERUBISU Ikebukuro east store

- ①03-5396-0577
- ②Same as above
- ③Dai-3 KU Build 1F, 1-39-6, Higashi-Ikebukuro, Toshima-ku
- ④11:00-24:00
- ⑤Open year round

MAP P2



Hearty thick noodles with fish stock flavor.

Tsukemen
750 yen
(tax included)

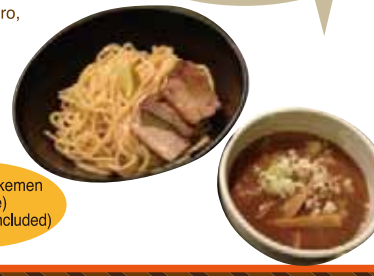
KINGKONG

KING KONG

- ①03-6914-2070
- ③Koizumi-build 1F, 1-32-2, Higashi-Ikebukuro, Toshima-ku
- ④11:00-22:00
- ⑤Open unless otherwise noted

MAP P3

Torofuru Tsukemen
(mid size)
800 yen (tax included)



Rich but refreshing taste from hidden flavor of fruits

ばんから 池袋本店

BANKARA Ikebukuro main store

- ①03-3983-4044
- ②http://www.ramen-bankara.com/shop.html
- ③Atariya Build 1F, 1-17-3, Minami-Ikebukuro, Toshima-ku
- ④11:00-05:00
- ⑤Open unless otherwise noted

MAP P2

池袋東口店

BANKARA Ikebukuro east

- ①03-3983-4044
- ②Same as above
- ③Dai-1 Sakata Build, 1-13-4, Higashi-Ikebukuro, Toshima-ku
- ④11:00-05:30
- ⑤Open unless otherwise noted

MAP P3-B



Tasty with flavor of sweetness, noodles with a rich tonkotsu soup.

Kakuni-Bankara Ramen
700 yen
(tax included)

屯ちん 池袋本店

Tonchin Ikebukuro main store

- ①03-3987-8556
- ②http://tonchin.foodex.ne.jp/shop.html
- ③1F, 2-26-2, Minami-Ikebukuro, Toshima-ku
- ④11:00-05:00
- ⑤Open year round

MAP P2

池袋西口店

Tonchin Ikebukuro west

- ①03-3985-0300
- ②Same as above
- ③1-27-1, Nishi-Ikebukuro, Toshima-ku
- ④11:00-05:30
- ⑤Open year round

MAP P2



Tokyo tonkotsu noodles originated in the Tokyo.

Ramen
650 yen (tax included)

さっぽろ香純 池袋店

Sapporo kasumi Ikebukuro

- ①03-3980-0380
- ③Orola Build 1F, 2-18-2, Ikebukuro, Toshima-ku
- ④Weekdays 11:00-01:30 Sunday and Holiday 11:00-23:00
- ⑤Open year round

MAP P2-D

Miso-Ramen
750 yen
(tax included)



Sapporo noodles from Hokkaido with big slices of barbecued pork and negi onions.

Ikebukuro amusements !

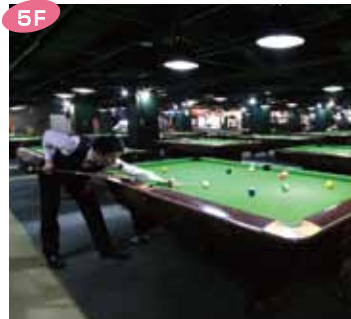
There are a lot of entertainment in Ikebukuro. Play sports with your friends and enjoy new video games. Some shops would surprise you with interesting goods. Ikebukuro is something like amusement park.



8F
Taito Darts Stadium
The large scale darts field with the latest 47 online darts machines. 10:00-01:00



7F
Ikebukuro Rosa Bowling
2 floors 28 lanes with automatic scorer. 10:45-05:00 (Last admission at 04:00)



5F
Billiards Rosa
One of the largest pool hall in Japan with 32 pool tables and a snooker table ! 11:30-04:30



1F
Taito Station at Ikebukuro Rosa
An amusement arcade has an abundant variety of crane games, video games and simulation games. 10:00-24:55

ROSA
The long-established (most long-loved) amusement center in Ikebukuro.

☺🍴 Rosa Kaikan

㊥ロサ会館

①http://www.rosakaikan.com/
②1-37-12, Nishi-Ikebukuro, Toshima-ku
③Differs for each shop
④Open year round
⑤Some credit cards can be used at some shops

2 movie theaters, tennis & football courts, and some restaurants are also available.



The Rose LED signboard is a symbol of West Ikebukuro.



The middle of Sunshine 60 street, big bowling pin sign is landmark.



40 lanes for bowling



40 rooms for karaoke

SPORTS ENTERTAINMENT ROUND1

The multi entertainment space from sports to relaxation.

☺ ROUND ONE Ikebukuro store

㊥ラウンドワン 池袋店

①http://www.round1.co.jp/shop/tenpo/tokyo-ikebukuro.html
②Ikebukuro Square, 1-14-1, Higashi-Ikebukuro, Toshima-ku
③open for 24 hours everyday
④Open year round
⑤VISA/MASTER/JCB/UFJ NICOS /DC CARD

Bowling, billiard, darts, table tennis, karaoke and an amusement arcade.

*These photographs are images.

Models IMON

☺🛒 Railroad model's shop Models IMON

㊥鉄道模型店 Models IMON

①http://www.imon.co.jp/
②Goko Building 6F, 1-18-1, Nishi-Ikebukuro, Toshima-ku
③Weekdays 10:00-21:00
Weekends and holidays 10:00-20:00
④Open year round
⑤VISA/MASTER/AMEX/Diners/JCB

You can buy a variety of railway models from "steam-locomotives" to "Shinkansens" and will become wonderful souvenirs.

A paradise of sophisticated and accurate railway model.



It's fun to see the large-scale diorama with running models.

The book store just like amusement park.

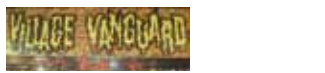
☺🛒 VILLAGE VANGUARD

ヴィレッジヴァンガード

Group all Japanese subcultures together. BOOKS, COMICS, MAGAZINES, CDS, DVDS, TOYS, POSTERS, CARDS, STATIONARY, BAG and more !!!



Sunshinecity shop entrance,



池袋サンシャインシティ アルタ店 (東口) MAP P3-A

VILLAGE VANGUARD in The Sunshine City "ALTA"

①http://www.village-v.co.jp/
②The Sunshine City "ALTA" 1F 3-1-3, Higashi-Ikebukuro, Toshima-ku
③10:00-20:00
④Open unless otherwise noted
⑤UnionPay/VISA/MASTER/AMEX/Diners/JCB



Tohoku Shinkansen E5 system "falcon" and steam locomotive progress form "Mao Zedong" in China



A lot of Japanese items, left-hand item is Manekineko (welcoming cat) invite good fortune.



Maruicity shop entrance



Japanese sake cup, good for a souvenir.

マルイシティ池袋店 (西口) MAP P2-D

VILLAGE VANGUARD in Marui CITY Ikebukuro

①http://www.village-v.co.jp/
②Marui CITY Ikebukuro 8F 3-28-13, Nishi-Ikebukuro, Toshima-ku
③same as Marui CITY Refer to P.19.
④same as Marui CITY Refer to P.19.
⑤UnionPay/VISA/MASTER/AMEX/Diners/JCB



Ikebukuro East Exit Area

Here you'll find the latest fashions, luxury brands, cosmetics, home electronics stores, discount stores, and more. The east exit area is literally a shopper's paradise where you can find anything and everything including gifts for yourself! Indulge your desires to your heart's content.

池袋 PARCO

Direct access from Ikebukuro station, full of Japanese fashion trends.



Ikebukuro PARCO

⑬池袋パルコ

- ① <http://www.parco-ikebukuro.com>
- ② 1-28-2, Minami-Ikebukuro, Toshima-ku
- ③ Main building 10:00-21:00
AnnexP 11:00-21:00
Restaurant floor 7F/8F 11:00-23:00
- ④ Open year round
- ⑤ VISA/MASTER/AMEX/Diners/JCB

※A duty-free is possible.
Only a permission store is in part.

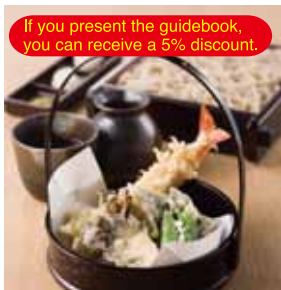
Offers a rich variety of selected shops like United Arrows, Journal Standard and etc. And enjoy dishes in the types of restaurants.

※Other services and the combined use with a coupon are impossible to each store community.

※The candidate of service is only the direction which had a meal.



The Ikebukuro PARCO main building



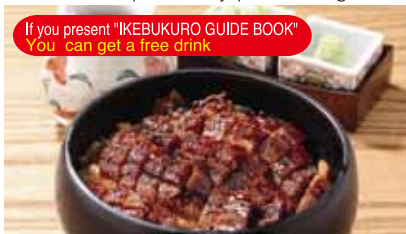
If you present the guidebook, you can receive a 5% discount.

Restaurant "Isobaya Sinsyu" (Soba izakaya) Main building 8F



If you present "IKEBUKURO GUIDE BOOK" You can get a free drink

Restaurant "Gyunta" (Okonomiyaki Yakisoba Teppanyaki) Main building 8F



If you present "IKEBUKURO GUIDE BOOK" You can get a free drink

Restaurant "Hitsumabushi Binchou" (Unagi) Main building 8F



An extensive selection of luxury items including Louis Vuitton, Hermes, Chanel, and Prada.



A symbol of Ikebukuro, connected to Ikebukuro Station, a giant terminal, which is the second largest in Japan.

SEIBU

A large scale department store featuring everything from specialty stores to luxury items



Seibu department store Ikebukuro main store

⑭西武百貨店池袋本店

- ① <http://www2.seibu.jp/ikebukuro/>
- ② 1-28-1 Minami-ikebukuro
- ③ Weekdays and Saturday 10:00-21:00, Sundays and Holidays 10:00-20:00
- ④ Open year round
- ⑤ UnionPay/Visa/MasterCard/AMEX/Diners/JCB/UC

One of the largest department stores in Japan. Various credit cards as well as the UnionPay card are accepted and there are staff that speak English and Chinese, Duty free refund are also available.



A variety of large scale specialty stores including Muji, Loft, and Yamano Gakki.

45 brands of popular Japanese and international cosmetics.



Easy access from hotels and station. Open until 10 p.m.

Give special rates for Ginren card and VISA card holders.



Canon, Nikon, camera bodies, lenses and accessories.

BIC CAMERA

ビッカメラ

One of the most fashionable shopping spot in Japan!



Bic camera - Ikebukuro

⑮ビックカメラ池袋本店

- ① http://www.biccamera.co.jp/shoplist/index_english.html
 - ② 1-41-5, Higashi-ikebukuro, Toshima-ku
 - ③ 10:00 - 10:00
 - ④ Open year round
 - ⑤ UnionPay/VISA/MASTER/AMEX/Diners/JCB
- ※Tax exemption is possible.

Cameras, watches, appliances for beauty, toys and etc. wide selection at lower price.



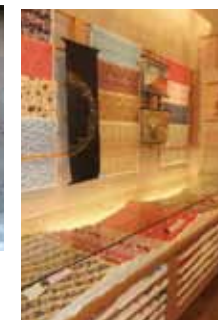
Wide selection of import and domestic brand watches.



Made in Japan products such as beauty appliances, shavers and cosmetics are perfect choice for your souvenirs.



Feel Japan with "Washi" and accessories which bring relaxation.



"Chiyogami" is very popular with beautiful pattern of Japanese festivals and culture.

紙のたかむら

The shop offers popular traditional Japanese paper "Washi" and Japanese accessories.



TAKAMURA paper's shop

⑯紙のたかむら

- ① <http://www.wagami-takamura.com/>
- ② 1-1-2, Higashi-ikebukuro, Toshima-ku
- ③ 11:00-18:45
- ④ Open unless otherwise noted
- ⑤ UnionPay/VISA/MASTER/AMEX/Diners/JCB

Enjoy Japanese life culture through the products featuring seasonal flowers and festivals in Japan.



An all-in-one stop for everything from brand name goods to gifts.



Don Quijote Ikebukuro Higashiguchi Ekimae Store

⑰ドン・キホーテ池袋東口駅前店

- ① <http://www.yokoso-world.jp/>
- ② 1-22-5 Minami-ikebukuro, Toshima-ku
- ③ Open 24 hours ④ Open year round
- ⑤ UnionPay/Visa/MasterCard/AMEX/Diners/JCB/UC

A wide selection of brand name and beauty goods at discount prices. Get lost in this savings wonderland! Tax free shopping is also available. *Tax free procedures are required.



We have everything! Open 24 hours a day!



Ikebukuro West Exit Area



The allure to the west exit area of Ikebukuro is the many faces that it shows, including not just shopping and food, but also universities, cultural facilities, parks, office buildings and shopping districts! Just by walking down the streets a bit, you're sure to encounter a multitude of memorable experiences.



A watch salon at number 8-10, 6F

TOBU

IKEBUKURO

The department store located in station building with the largest sales area in Tokyo.

Tobu department store Ikebukuro

18 東武百貨店 池袋店

- ① <http://www.tobu-dept.jp>
- ② 1-1-25, Nishii-Ikebukuro, Toshima-ku
- ③ 10:00-20:00 (B2F~3F, 9F-10F)
Every day except Sunday and a holiday 10:00-21:00
- ④ Open year round
※ January 1, 2014 is a special holiday.
- ⑤ UnionPay/VISA/MASTER/AMEX/Diners/JCB
※ A duty-free counter B1F

Direct access from Ikebukuro station. A wide selection of popular import and domestic brands. Enjoy shopping at "Sanrio Shop", "Tokyo skytrees official goods." in Ikebukuro Tobu department.



Cosmetics floor reopened last year. 2F Selected shops import and domestic 47 brands. 3F Newly opened 6 beauty salon.



Tokyo skytree® pens are ¥3,990 each (price including tax) 4 colours.

Tokyo skytree official goods are at number 3, 5F. Including neckties, pins and limited item goods of TOBU.

[Shiseido] Tokyo skytree® eau de parfum (50ml) in ¥3,150 (price including tax) ©TOKYO-SKYTREE

LUMINE

IKEBUKURO

Lead the trends in Ikebukuro

Lumine Ikebukuro

19 ルミネ池袋店

- ① <http://www.lumine.ne.jp/ikebukuro/>
- ② 1-11-1, Nishi-Ikebukuro, Toshima-ku
- ③ Shopping 11:00-21:30
Restaurant 11:00-23:00
- ④ Open year round
※ January 1, 2014 is a special holiday.
- ⑤ VISA/MASTER/AMEX/Diners/JCB

Ladies'/Men's fashion and cafes/Restaurants. A wide selection of popular shops.

Cosmetics are in the basement 1F. (SABON)



8F courtyard

8F restaurant (Tsukiji Tama sushi)



OICITY マルイシティ池袋

Marui CITY Ikebukuro

20 マルイシティ池袋

- ① <http://www.0101.co.jp/stores/guide/store480.html>
- ② 3-28-3, Nishii-Ikebukuro, Toshima-ku
- ③ 11:00-20:30 ※ Business hours may change with events etc.
- ④ Non-regular It is a special holiday on 2013, August 21 and January 1
- ⑤ UnionPay/VISA/MASTER/AMEX/Diners/JCB
※ Tax exemption is possible.
※ A receipt is totaled and shopping more than the total amount of 10,501 yen (including tax) on the 1st is an object.
※ A passport and a receipt are required.

Popular brands fashion, shoes, bags and cafes. A wide selection of menus fulfilling your lifestyle.

① 1F Fashion goods floor



② 3F Ladies' fashion floor (RU)



Hotel Metropolitan

Welcoming you with heartfelt hospitality.

Hotel Metropolitan

If you present "IKEBUKURO GUIDE BOOK" restaurant of hotel direct management 10% off

21 ホテルメトロポリタン

☎03-3980-1111

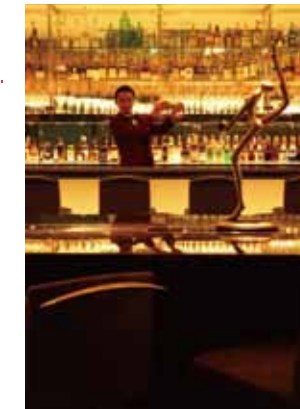
- ① <http://www.metropolitan.jp/>
- ② 1-6-1, Nishi-Ikebukuro, Toshima-ku
- ⑤ UnionPay/VISA/MASTER/AMEX/Diners/JCB

A wide variety of restaurants. Traditional Japanese cuisine, Chinese dishes, Italian cuisine and buffet restaurant. Please enjoy dining and beautiful views from the 25th floor.

The cherry blossoms are in full bloom at spring,



The lobby is spacious and leaves us with a free and relaxed feeling.



Enjoy traditional Japanese dishes with feeling of the season. Japanese food restaurant named "Hana Musashi"

A wide selection of Japanese sake.

Echika IKEBUKURO

A commercial facility direct access from Tokyo metro Ikebukuro station.



22 Echika池袋

- ① <http://www.tokyoMetro.jp/echika/ikebukuro/>
- ② Tokyo Metro Fukutoshin-Line Ikebukuro station yard
- ③ 7:30-23:00 ※It changes with stores.
- ④ Open year round
- ⑤ VISA/MASTER/AMEX/Diners/JCB

The town composed of 5 distinct zones offers the latest fashion, foods trends and relaxation space.



A fashion goods zone in Echika for working women having a busy schedule.



The key concept is "Ikebukuro Montparnasse", the town having atmosphere of culture and art.



Black-themed I shape building with a view through the slits.



Enjoy shopping without umbrellas even on rainy day.

Esola

A commercial facility direct access from Ikebukuro station of Tokyo metro Yurakucho line.



23 Esola池袋

- ① <http://www.esola-ikebukuro.com/>
- ② 1-12-1, Nishi-Ikebukuro, Toshima-ku
- ③ Shop 10:30-21:30
Restaurant 11:00-23:00
- ④ Open unless otherwise noted
- ⑤ VISA/MASTER/AMEX/Diners/JCB

A source of unique fashion space, shops offer the latest fashion and items. Enjoy the finest restaurants and cafes.



Enjoy more than 60 brands of beer imported from all over the world. Taste world's cuisines and coffees.



サクラカフェ池袋

- ① <http://www.sakura-cafe.asia/ikebukuro/>
- ② 2-39-10, Ikebukuro, Toshima-ku, SAKURA HOTEL Annex 1 F
- ③ open for 24 hours everyday
- ④ Open year round

MAP P2-D

The cafe on 1F terrace of the Sakura hotel welcome guests come from nearly 110 countries in a year.

Japanese traditional bar "Izakaya" experience to you!!



If you present "IKEBUKURO GUIDE BOOK" One plate of special "Fresh" Kabu (Turnip)

24 千登利 Chidori

- ① <http://tabelog.com/tokyo/A1305/A130501/13008918/>
- ② 1-37-15 Nishi-Ikebukuro, Toshima-ku
- ③ 16:30-22:30 (L.O.)
- ④ Tuesday

If you want Japanese common food and sake, we recommend here !This 60 year's old "Izakaya" will welcome to you !



Taste "Niku tofu" and grilled pork.

Recommended Ikebukuro hotels



Close-in hotel enable you to access any place in Tokyo.

第一イン池袋

Dai-ichi Inn Ikebukuro
03-3986-1221
<http://www.dh-ikebukuro.com/>
2 minutes walk from east exit of Ikebukuro station, 24 hours convenience store in the hotel. Promise your comfortable stay.

MAP P2

- ① 1-42-8, Higashi-Ikebukuro, Toshima-Ku
- ② Leave the east exit; turn to the left, progresses to the end. BIC camera head office right in back.
- ③ Check-in 15:00 check-out 11:00
- ④ UnionPay/VISA/MASTER/AMEX/Diners/JCB



The center of tourist spot. Rooms are quiet and safe.

ホテルグランドシティ

Hotel Grand City
03-3984-5121
<http://www.grand-city.gr.jp/index.html>
Buffet style breakfast offers more than 88 dishes is very popular. Located in the center of busy shopping street, very convenient for tourists.

MAP P3

- ① 1-30-7, Higashi-Ikebukuro, Toshima-Ku
- ② Go straight on UJI Bank of the Ikebukuro Station east exit front and a way between AX. Then, make a left turn at the fourth crossroads.
- ③ Check-in 14:00 Check-out 10:00
- ④ UnionPay/VISA/MASTER/AMEX/Diners/JCB



The landmark white 14-story building

東急ステイ池袋

Tokyu Stay Ikebukuro
03-3984-1091
<http://www.tokyustay.co.jp/hotel/IKE/>
3 years since open. Clean and safety hotel located near west exit of Ikebukuro station. Semi-double bed rooms are available at special price.

MAP P2-D

- ① 2-12-2, Nishi-Ikebukuro, Toshima-Ku
- ② 7 minutes from the JR Ikebukuro Station west exits. Shopping mall "Echika" C1 exit is convenient.
- ③ Check-in 15:00 Check-out 11:00
- ④ TOP/VISA/MASTER/AMEX/Diners/JCB



The white building along the gekiyo street.

ホテルオーエド

Hotel Oedo
03-3971-0288
<http://www.oed.jp>
Down quilt, internet and free Wi-Fi

MAP P2

- ① 2-68-5, Ikebukuro, Toshima-Ku
- ② 5 minutes from the JR Ikebukuro Station west exits (Turn to the right at the crossing in front of Maruji)
- ③ Check-in 16:00 check-out 10:00
- ④ VISA/MASTER/AMEX/Diners/JCB



24 hours coffee service for the hotel guests.

ホテルスタープラザ池袋

Hotel Star Plaza Ikebukuro
03-3590-0005
<http://www.star-hotel.co.jp/>
Best location for business! 10 minutes to Shinjuku, 15 minutes to Ueno from the hotel.

MAP P2-D

- ① 2-10-2, Ikebukuro, Toshima-ku
- ② A one minute walk to Ikebukuro station west exit C6. It is located at 150 m.
- ③ Check-in 16:00 check-out 10:00
- ④ UnionPay/VISA/MASTER/AMEX/JCB



Located on the main street, a female guest can feel safe and secure.

ホテルニュースター池袋

Hotel New Star Ikebukuro
03-3989-0015
<http://www.star-hotel.co.jp/>
Located in a quiet area, a little way off busy environment. Checkout time is 12:00 noon, no need to hurry in the morning.

MAP P2

- ① 2-61-6, Ikebukuro, Toshima-Ku
- ② A 5 minute walk from the west exit Ikebukuro station.
- ③ Check-in 15:00 check-out 12:00
- ④ UnionPay/VISA/MASTER/AMEX/JCB



On the main street (Green Odori), the east exit of the Ikebukuro station.

京王プレッソイン池袋

Keio Presso Inn
03-5396-0202
<http://www.presso-inn.com/>
The hotel is like a select hideaway, promise comfortable stay.

MAP P3

- ① 2-29-11, Minami-Ikebukuro, Toshima-Ku
- ② 4 minutes from the JR Ikebukuro Station east exits
- ③ Check-in 15:00 Check-out 10:00
- ④ UnionPay/VISA/MASTER/AMEX/Diners/JCB



ザ・ビー池袋

the b Ikebukuro
03-3980-1911
1-39-4, Higashi-Ikebukuro, Toshima-Ku
MAP P2 3 minutes from the JR Ikebukuro Station east exits along Meiji-Doori

ホテルウィングインターナショナル池袋

Hotel Wing International Ikebukuro
03-5396-5555
3-10-7, Higashi-Ikebukuro, Toshima-Ku
MAP P3 8 minutes from the JR Ikebukuro Station east exits

サンシャインシティプリンスホテル

Sunshinecity Princehotel
03-3988-1111
3-1-5, Higashi-Ikebukuro, Toshima-Ku
MAP P3-A 8 minutes from the JR Ikebukuro Station west exits.

ホテルメトロポリタン

Hotel Metropolitan
03-3980-1111
1-6-1, Nishi-Ikebukuro, Toshima-Ku
MAP P2-D 1 minutes from the JR Ikebukuro Station east exits.



ホテルベルクラシック 東京
HOTEL BELLCLASSIC TOKYO
03-5950-1200
<http://www.hotel-bellclassic.co.jp/>
The wedding hotel located in Otsuka next to Ikebukuro. The location is within walking distance of the Sunshine City.

- ①3-33-6, Minami-Otsuka, Toshima-Ku
- ②1 minute from JR Otsuka station
- ③Check-in 14:00 Check-out 11:00
- ④VISA/MASTER/AMEX/Diners/JCB

Easy access! One minute walk from Otsuka station located next to Ikebukuro station.




リッチモンドホテル東京目白
Richmond Hotel Tokyo Mejiro
03-3565-4111
<http://richmondhotel.jp/mejiro/>
The hotel is close to Mejiro station. Located in classy area and offers comfortable stay.

- ①3-5-14, Mejiro, Toshima-Ku
- ②Go straight ahead through the Mejiro Street in front of the wicket of JR Yamanote Line Mejiro Station to the left
- ③Check-in 14:00 Check-out 11:00
- ④UnionPay/VISA/MASTER/AMEX/Diners/JCB

2 minutes walk from Mejiro station, convenient, comfortable and safety.



ホテルメッツ目白
HOTEL METS MEJIRO
03-5985-0011
<http://www.jrhotelgroup.com/eng/code/codeeng125.htm>
Mejiro is with rich green environment, you will not even feel you are in Tokyo. The hotel is very close to the station, promise you comfortable stay with a elevator with security. Free Wi-Fi, air purifiers and humidifier are equipped.

- ①1-4-1 Mejiro, Toshima-ku
- ②Go through JR Mejiro Station ticket gate, and you will immediately find it on your right.
- ③Check-in 15:00 Check-out 11:00
- ④VISA/MASTER/AMEX/Diners/JCB

One minute walk from the Mejiro station.

From Ikebukuro station to the Haneda airport takes only 36 minutes by Tokyo monorail.

(Haneda Airport International Terminal)

By way of JR yamanote line Ueno and Tokyo station

4 minutes interval during the daytime, you don't have to wait at Hamamatsucho station.

Easy access, all cars start during the daytime bound for Haneda airport.

Suica, PASMO and other railway IC passes are available.



Display time is minimum, connection time is not included.

TOKYO MONORAIL CO.,LTD.

▶ More Info Tokyo Monorail search <http://www.tokyo-monorail.co.jp/english/index.html>

When you have some free time, visit famous locations in the Kanto Area with the JR Kanto Area Pass!

JR Kanto Area Pass

Mt. Fuji (Yamanashi) 富士山 (山梨) ©Yamanashi Prefecture Tourist Association

The JR Kanto Area Pass is a discount ticket that allows you to freely get on and off JR East lines in the Tokyo and Kanto region. You can also use the Shinkansen and limited express trains as well, making it ideal for short trips from Tokyo. After you've enjoyed shopping in Ikebukuro, why not expand your trip to enjoy the nature and culture of Japan as well?

Prices : Adults(12 and over) 8,000 yen, Children(6-11) 4,000 yen

The pass is intended for foreign customers with a foreign passport (regardless of length of stay in Japan). Please bring your passport at the time of purchase.

Validity period : Three consecutive days

Valid on the following trains : You can freely get on and off the following lines in the specified area, limited express trains, rapid service trains, express trains and local trains as many times as you want during the validity period of the pass.

- JR East ●Izu Kyuko ●Tokyo Monorail
- Fujikyuko ●Joshi Dentetsu
- Saitama New Urvan Transit Line (New Shuttle) – Between Omiya and The Railway Museum

Notes:

- The pass cannot be used on the Tokaido Shinkansen and JR Buses
- A separate fare will be required if you use the pass on lines and trains other than those listed above. For example, if you use the Tobu Nikko, SPACIA Nikko, Tobu Kinugawa, or SPACIA Kinugawa, which are outside of the JR East area, you will be required to pay the difference at the station when you get off.
- A separate limited express ticket is required to use the Hayabusa, Super Komachi: and Glan CLASS.
- A separate numbered seating ticket is required when using the observation car on the Fujisan Limited Express on the Fujikyuu Railway. A separate seating ticket (additional fee) is required for the Fujitozan Train on the Fujikyuu Railway.



Izu (Shizuoka) 伊豆 (静岡)



Kawaguchiko (Yamanashi) 河口湖 (山梨)



Kusatsu Hot Springs (Gunma) 草津温泉 (群馬) ©Gunma prefecture/©JNTO



Nikko (Tochigi) 日光 (栃木)

For more details and how to purchase the JR Kanto Area Pass, please visit the JR Ikebukuro Station West Exit View Plaza!

Access: Right outside the JR Ikebukuro Station West Exit

Business hours: Weekdays 10:00-20:00, Weekends and Holidays 10:00-18:00 www.jreast.co.jp/e/kantoareapass/

MAP P2-D

